

# 1956 Meteor Models & Specifications

**Meteor Niagara** at [1956-meteor-niagara-models-and-specs.pdf](#) (6 pages)

**Meteor Rideau** at [1956-meteor-rideau-models-and-specs.pdf](#) (10 pages)



A **meteor** is a **meteoroid**—a piece of rock, dust, or other mater from outer space—that has entered the earth's atmosphere at high speed and is hot, burning, and crumbling from friction with the atmosphere as it falls to earth. It is incandescent and with its glowing wake of shredding material can be seen streaking across the sky. It is colloquially called a "**shooting star**" or a "**falling star**." A **meteorite** is a particle that has reached the ground.

Meteor automobiles were offered by **Ford Motor Company of Canada**, a wholly owned subsidiary of Ford Motor Company, from:

- 1948-1954, Mercury-Meteor-Lincoln Division, Ford Motor Company of Canada Limited, Walkerville, Ontario
- 1954-1961, Mercury-Meteor-Lincoln Division, Ford Motor Company of Canada Limited, Oakville, Ontario
- 1961-1963, Meteor part of Mercury line
- 1963-1976, Ford Motor Company of Canada Limited, Oakville, Ontario.

The 1956 Meteors, herein, were manufactured at the **Oakville Assembly Plant**, Oakville, Ontario, Canada and sold through **Canadian Mercury-Lincoln-Meteor dealerships** as low-priced products in their lineup. They were built on Ford chassis and bodies, with limited Ford running gear, but with notably different grille and molding.

**1956 Meteor, Meteor Niagara, and Meteor Rideau** are "foremost in style with new bold V-sweep grille, long, low sleek lines." **Niagara** and **Rideau** models have a bodyside full-length bright-metal molding of "**meteor-bolt**" design with a mid "**flash**" contrasting paint colour—*Alaska White*, **Black**, **Torch Red**, or **Gold** [est]—on Single-Tone, Two-Tone, or Tri-Tone paint schemes. The **Rideau** molding also has an impressed black-painted "**jet exhaust**" design at rear. Striking! **Web page** [1956-ford.com/1956-meteor-niagara-rideau-brochure.html](#)

"**Safeguard Design**" is the Meteor name for the installed Ford "**Lifeguard Design**" safety features.

## ALL MODELS

- **Meteor Two-Door Sedan**
- **Meteor Four-Door Sedan**
- **Meteor Ranch Wagon** 2 dr, 6 pass
- **Meteor Sedan Delivery** 2 dr, 1 pass, panel
- **Meteor Niagara Two-Door Sedan**
- **Meteor Niagara Four-door Sedan**
- **Meteor Niagara Victoria** 2 dr, pillarless hdtp
- **Meteor Niagara Ranch Wagon** 2 dr, 6 pass
- **Meteor Rideau Club Sedan** 2 dr
- **Meteor Rideau Town Sedan** 4 dr
- **Meteor Rideau Victoria** 2 dr, pillarless hdtp
- **Meteor Rideau Four-Door Victoria** 4 dr, pillarless hdtp
- **Meteor Rideau Crown Victoria** 2 dr, (steel top)
- **Meteor Rideau Sunliner** 2 dr, convertible
- **Meteor Rideau 6-Pass Country Sedan** 4 dr, stn wagon
- **Meteor Rideau 8-Pass Country Sedan** 4 dr, stn wagon

## Serial Number Location

1949-1954, stamped on identification plate on cowl and on frame right side under hood

1955-1967, stamped on identification plate attached to left front door pillar post

1968-1973, stamped on plate attached to left front corner of dashboard, viewed through windshield

## Engine Number Location

1949-1954, stamped on identification plate on cowl

1955-1967, stamped on identification plate attached to left front door pillar post

## 4 Engines Hp & torque ratings are SAE pre-1972 "gross"

- Std **Meteor V-8 - 272-cid** 90°, 2-ohv, 3.62" bore x 3.30" stroke, 5 main bearings, 2-bbl carb, 12-volt elec, 4-blade fan, single-exh
  - **173-hp** @ 4400 rpm, 260 lb-ft torque @ 2400 rpm, 8.0:1 comp ratio, 160 psi, **Standard** or opt **OD**
  - **176-hp** @ 4400 rpm, 264 lb-ft torque @ 2400 rpm, 8.4:1 comp ratio, 165 psi, opt **Merc-O-Matic Dr**
  
- Std **Meteor V-8 - 292-cid** 90°, 2-ohv, 3.75" bore x 3.30" stroke, 5 main bearings, 4-bbl carb, 12-volt elec, 4-blade fan, dual-exh
  - **200-hp** @ 4600 rpm, 285 lb-ft torque @ 2600 rpm, 8.0:1 comp ratio, 155 psi, **Standard** or opt **OD**
  - **202-hp** @ 4600 rpm, 289 lb-ft torque @ 2600 rpm, 8.4:1 comp ratio, 160 psi, opt **Merc-O-Matic Dr**
  
- Opt **Meteor V-8 - 312-cid** 90°, 2-ohv, 3.80" bore x 3.44" stroke, 5 main bearings, 4-bbl carb, 12-volt elec, 4-blade fan, dual-exh
  - 225-hp** @ 4600 rpm, 324 lb-ft torque @ 2600 rpm, 9.0:1 comp ratio, 165 psi, opt **Merc-O-Matic Dr** (reg'd)  
*mid model-year few installed*
  
- "Delete Option" **Meteor I-6 - 223-cid** Inline, 2-ohv, 3.62" bore x 3.60" stroke, 4 main bearings, 1-bbl carb, 12-volt elec, 3-blade fan, single-exh
  - 137-hp** @ 4200 rpm, 202 lb-ft torque @ 1600-2600 rpm, 8.0:1 comp ratio, 150 psi, **all drives**  
*mid model-year few installed*

**Engine Oil** 4 imp qt, 5 imp qt w/ filter

**Oil Bath Air Cleaner** fill to level mark (approx. 1 imp pint)

**Cooling System** 16.5 imp qt, 17.5 imp qt w/ heater, operating pressure 13 lb

**Fan** 4-blade

**Electrical System** 12-volt, Negative Ground, Spark Plugs 18 mm Gap .032 to .036," Spark Control full vacuum

**V-8 Firing Order** 1-5-4-8-6-3-7-2, Point Gap .014 to .016," Timing BTDC 3° (std) 6° (auto) 10° max,

Valve Clearance int .019" exh .019" (hot)

**I-6 Firing Order** 1-5-3-6-2-4, Point Gap .024 to .026," Timing BTDC 4° (std) 6° (auto) 8° max,

Valve Clearance intake .015" exh .019" (hot)

**Standard Trans** 2.5 imp pint, **Overdrive** 3.5 imp pint, **Merc-O-Matic Dr** 8 imp gt

**Differential** 2.5 imp pint

**Fuel Tank** 14.5 imp gal (car), 15.5 imp gal (stn wagon & Courier)

**Brake Pedal Free Travel** 5/16 to 7/16"

## 3 Transmissions

- Std **Silent-Ease Standard** (manual 3-speed)
  - 1st, 2nd (synchro), 3rd (Synchro), & Reverse
  
- Opt **Touch-O-Matic Overdrive** (manual 3-spd w/ auto planetary 4th-spd Overdrive gear)
  - 1st, 2nd (synchro), 3rd (synchro), auto 4th OD (30% lower eng rpm than 3rd), & Reverse
  - Gear selector on steering column "H" pattern
  - Overdrive push/pull T-handle below control panel
  - Lock-in** (engage OD) push *in* T-handle when car is stopped or at any speed & let-up throttle pedal when above 27-28 mph (auto disengage & downshift to 3rd below 21-22 mph)
  - Kick-down** (to 3rd, for hill climbing or passing) floor throttle pedal, (let-up pedal to auto return to OD)
  - Lock-out** (disengage OD) pull *out* T-handle when car is stopped or in "kick down" (3rd) operation
  
- Opt **Speed-Trigger Merc-O-Matic Drive** (automatic 3-speed)
  - Low (1st), Intermediate (2nd, Passing Gear), High (3rd), & Reverse
  - 5-Position Safety-Sequence Selector w/ illuminated indicator dial on steering column
  - P** (Park)
  - R** (Reverse)
  - N** (Neutral) car can be towed up to 12 miles at under 40 mph, otherwise with rear wheels raised
    - **start engine**
  - DR** (Drive)
    - **start-out in 2nd** & auto upshift to 3rd (typical driving)
    - **start-out at full-throttle in 1st** (Speed-Trigger) & auto upshifts to 2nd (30 mph) & 3rd (65 mph)
    - **full-throttle kick-down to Passing Gear (2nd)** (below 65-68 mph & above 17-23 mph)
    - **full-throttle kick-down to 1st** (below 17-23 mph)
  - LO** (Low)
    - **start-out in 1st gear & hold** (up to 35 mph), *auto upshifts to 2nd & 3rd if/when DR selected*
    - **downshift to 2nd & hold** (below 60 mph & above 17-23 mph - engine braking)
    - **downshift to 1st & hold** (below 17-23 mph - engine braking)

### Clutches

- Semi-centrifugal, dry, single plate
- **9-1/2"** (I-6 223 eng)
- **10"** (V-8 272, 292, & 312 engs)
- Pedal free travel 1-1/8 to 1-3/8"

### Rims

- Pressed steel, welded
- 15" dia x 5" wide
- 5 lug x 4.5" (114.3 mm) bolt pattern

### Tires

- Bias 4-ply  
(opt 6-ply Sedan Delivery)
- 6.70" x 15" or 7.10 x 15"
- Tubeless, black sidewall

# 1956 Meteor Two-Door Sedan



6 pass

Black rubber windshield & rear window molding, no bodyside molding

Single-Tone ext paint

Production (6-cyl) 1,462 + (V-8) 1,843 = total **3,305**

## Std Model 270A

**\$2,327** CAD FOB Oakville (std trans) Production 1,843 Shipping wgt 3,200 lb

**Meteor V-8 - 272-cid, 173-hp** @ 4400 rpm, 260 lb-ft tq @ 2400 rpm, 8.0:1 cr, 160 psi, 2-bbl, single-exh, w/

- **Standard**, 10" clutch, 3.20 (opt 3.89) axle, 6.70 x 15" tires
- Opt **Overdrive**, 10" clutch, 3.89 (opt 3.20) axle, 6.70 x 15" tires
- Opt **Merc-O-Matic Dr**, (**176-hp**, 264 lb-ft tq, 8.4:1 cr, 165 psi), 3.22 (opt 3.55) axle, 6.70 x 15" tires, or

## Opt Model 570A

**\$2,196** CAD FOB Oakville (std trans) Production 1,462 Shipping wgt 3,170 lb

**Meteor I-6 - 223-cid, 137-hp** @ 4200 rpm, 202 lb-ft tq @ 1600-2600 rpm, 8.0:1 cr, 150 psi, 1-bbl, single-exh,

*mid model-year* w/

- **Standard**, 9-1/2" clutch, \_\_\_\_ axle, 6.70 x 15" tires
- Opt **Overdrive**, 9-1/2" clutch, \_\_\_\_ axle, 6.70 x 15" tires
- Opt **Merc-O-Matic Dr**, \_\_\_\_ axle, 6.70 x 15" tires

# 1956 Meteor Four-Door Sedan



6 pass

Black rubber windshield & rear window molding, no bodyside molding

Single-Tone ext paint

Production (6-cyl) 1,731 + (V-8) 2,311 = total **4,042**

## Std Model 273A

**\$2,385** CAD FOB Oakville (std trans) Production 2,311 Shipping wgt 3,240 lb

**Meteor V-8 - 272-cid, 173-hp** @ 4400 rpm, 260 lb-ft tq @ 2400 rpm, 8.0:1 cr, 160 psi, 2-bbl, single-exh, w/

- **Standard**, 10" clutch, 3.20 (opt 3.89) axle, 6.70 x 15" 4-ply tires
- Opt **Overdrive**, 10" clutch, 3.89 (opt 3.20) axle, 6.70 x 15" 4-ply tires
- Opt **Merc-O-Matic Dr**, (**176-hp**, 264 lb-ft tq, 8.4:1 cr, 165 psi), 3.22 (opt 3.55) axle, 6.70 x 15" tires, or

## Opt Model 573A

**\$2,254** CAD FOB Oakville (std trans) Production 1,731 Shipping wgt 3,210 lb

**Meteor I-6 - 223-cid, 137-hp** @ 4200 rpm, 202 lb-ft tq @ 1600-2600 rpm, 8.0:1 cr, 150 psi, 1-bbl, single-exh,

*mid model-year* w/

- **Standard**, 9-1/2" clutch, \_\_\_ axle, 6.70 x 15" tires
- Opt **Overdrive**, 9-1/2" clutch, \_\_\_ axle, 6.70 x 15" tires
- Opt **Merc-O-Matic Dr**, \_\_\_ axle, 6.70 x 15" tires

# 1956 Meteor Ranch Wagon



2 dr, 6 pass, station wagon

Black rubber windshield & rear window molding, no bodyside molding

Single-Tone ext paint

Production (6-cyl) 173 + (V-8) 676 = total **849**

**Stowaway back seat** bottom tilts up & forward, back folds forward & down as level-floor loadspace, length 74"

## Std Model 270D

**\$2,754** CAD FOB Oakville (std trans) Production 676 Shipping wgt 3,430 lb

**Meteor V-8 - 292-cid, 200-hp** @ 4600 rpm, 285 lb-ft tq @ 2600 rpm, 8.0:1 cr, 155 psi, 4-bbl, dual-exh, w/

- **Standard**, 10" clutch, 4.09 (opt 4.27) axle, 6.70 x 15" tires
- Opt **Overdrive**, 10" clutch, 4.27 (opt none) axle, 6.70 x 15" tires
- Opt **Merc-O-Matic Dr**, (**202-hp**, 289 lb-ft tq, 8.4:1 cr, 160 psi), 3.54 (opt none) axle, 6.70 x 15" tires, or

## Opt Model 570D

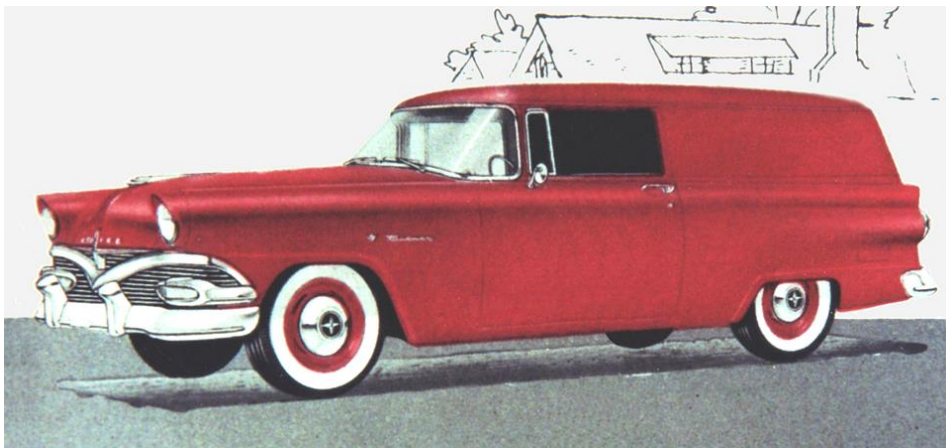
**\$2,623** CAD FOB Oakville (std trans) Production 173 Shipping wgt 3,400 lb

**Meteor I-6 - 223-cid, 137-hp** @ 4200 rpm, 202 lb-ft tq @ 1600-2600 rpm, 8.0:1 cr, 150 psi, 1-bbl, single-exh,

*mid model-year* w/

- **Standard**, 9-1.2" clutch, 4.09 (opt 4.27) axle, 6.70 x 15" tires
- Opt **Overdrive**, 9-1/2" clutch, 4.27 (opt none) axle, 6.70 x 15" tires
- Opt **Merc-O-Matic Dr**, 3.54 (opt none) axle, 6.70 x 15" tires

# 1956 Meteor Sedan Delivery



2 dr, 1 pass (driver), panel

**One bucket seat**, side-hinged panel-type rear door holds open in any position

Black rubber windshield & rear window molding, no bodyside molding

Single-Tone ext paint

Production (6-cyl) 220 + (V-8) 522 = total **742**

## Std Model 278A

**\$1,950** [est] CAD FOB Oakville (std trans & tires) Production 522

**Meteor V-8 - 272-cid, 173-hp** @ 4400 rpm, 260 lb-ft tq @ 2400 rpm, 8.0:1 cr, 160 psi, 2-bbl, single-exh, w/

- **Standard**, 10" clutch, 4.09 (opt 4.27) axle
- Opt **Overdrive**, 10" clutch, 4.27 (opt none) axle
- Opt **Merc-O-Matic Dr**, (**176-hp**, 264 lb-ft tq, 8.4:1 cr, 165 psi), 3.54 (opt none) axle

Weights (lb) (base model estimates by eng & trans types, options not incld)

- Std F 1876 + R 1513 = **Curb 3389 + Payload 711 = GVWR 4100** w/ 6.70 x 15" 4-ply Tires
- Opt F 1879 + R 1516 = **Curb 3395 + Payload 805 = GVWR 4200** w/ 7.10 x 15" 4-ply Tires
- Opt F 1881 + R 1518 = **Curb 3399 + Payload 1201 = GVWR 4600** w/ 7.10 x 15" 6-ply Tires, or

## Opt Mode 578A

**\$1,800** [est] CAD FOB Oakville (std trans & tires) Production 220

**Meteor I-6 - 223-cid, 137-hp** @ 4200 rpm, 202 lb-ft tq @ 1600-2600 rpm, 8.0:1 cr, 150 psi, 1-bbl, single-exh,  
*mid model-year* w/

- **Standard**, 9-1/2" clutch, 4.09 (opt 4.27) axle
- Opt **Overdrive**, 9-1/2" clutch, 4.27 (opt none) axle
- Opt **Merc-O-Matic Dr**, 3.54 (opt none) axle

Weights (lb) (base model estimates by eng & trans types, options not incld)

- Std F 1757 + R 1513 = **Curb 3270 + Payload 830 = GVWR 4100** w/ 6.70 x 15" 4-ply Tires
- Opt F 1760 + R 1516 = **Curb 3276 + Payload 924 = GVWR 4200** w/ 7.10 x 15" 4-ply Tires
- Opt F 1762 + R 1518 = **Curb 3280 + Payload 1320 = GVWR 4600** w/ 7.10 x 15" 6-ply Tires

**WEIGHTS** (base model estimates by eng & trans types, options not incld)

- **Dry Weight:** manufacturer's stated weight by engine type (without coolant, oils, fuel, driver, pass, or cargo)
- **Shipping Weight:** ready to ship—Dry Weight plus coolant, oils, & some fuel (without driver, pass, or cargo)
- **Curb Weight:** ready to drive—Shipping Weight plus full coolant, oils, fuel (without driver, pass, or cargo)
- **Gross Vehicle Weight (GVW):** loaded weight (gross)—Curb Weight plus weight of driver, pass, & actual cargo
- **Gross Vehicle Weight Rating (GVWR):** maximum loaded weight (gross) as recommended by manufacturer
- **Maximum Load Weight (Payload):** GVWR minus Curb Weight

[Also see these \(printable\) PDFs at website 1956-ford.com](#)

[\(or search & find with Google\)](#)

- 1956-ford-mainline-and-customline-models-and-specs.pdf (incld engs & trans) (11 pages)
- 1956-ford-mainline-and-customline-color-schemes.pdf (4 pages)
- 1956-ford-fairlane-and-crown-vic-models-and-specs.pdf (8 pages)
- 1956-ford-fairlane-and-crown-vic-color-schemes.pdf (10 pages)
- 1956-ford-station-wagon-and-courier-models-and-specs.pdf (9 pages)
- 1956-ford-ranch-wgn-parklane-6pass-country-sdn-color-schemes.pdf (6 pages)
- 1956-ford-8pass-country-sdn-squire-courier-color-schemes.pdf (6 pages)
- 1956-ford-all-colors-list.pdf (5 pages)
- 1956-meteor-models-and-specs.pdf (incld engs & trans) (8 pages)
- 1956-meteor-niagara-models-and-specs.pdf (6 pages)
- 1956-meteor-rideau-models-and-specs.pdf (10 pages)
- 1955-meteor-ext-paint-colours.pdf (5 pages)